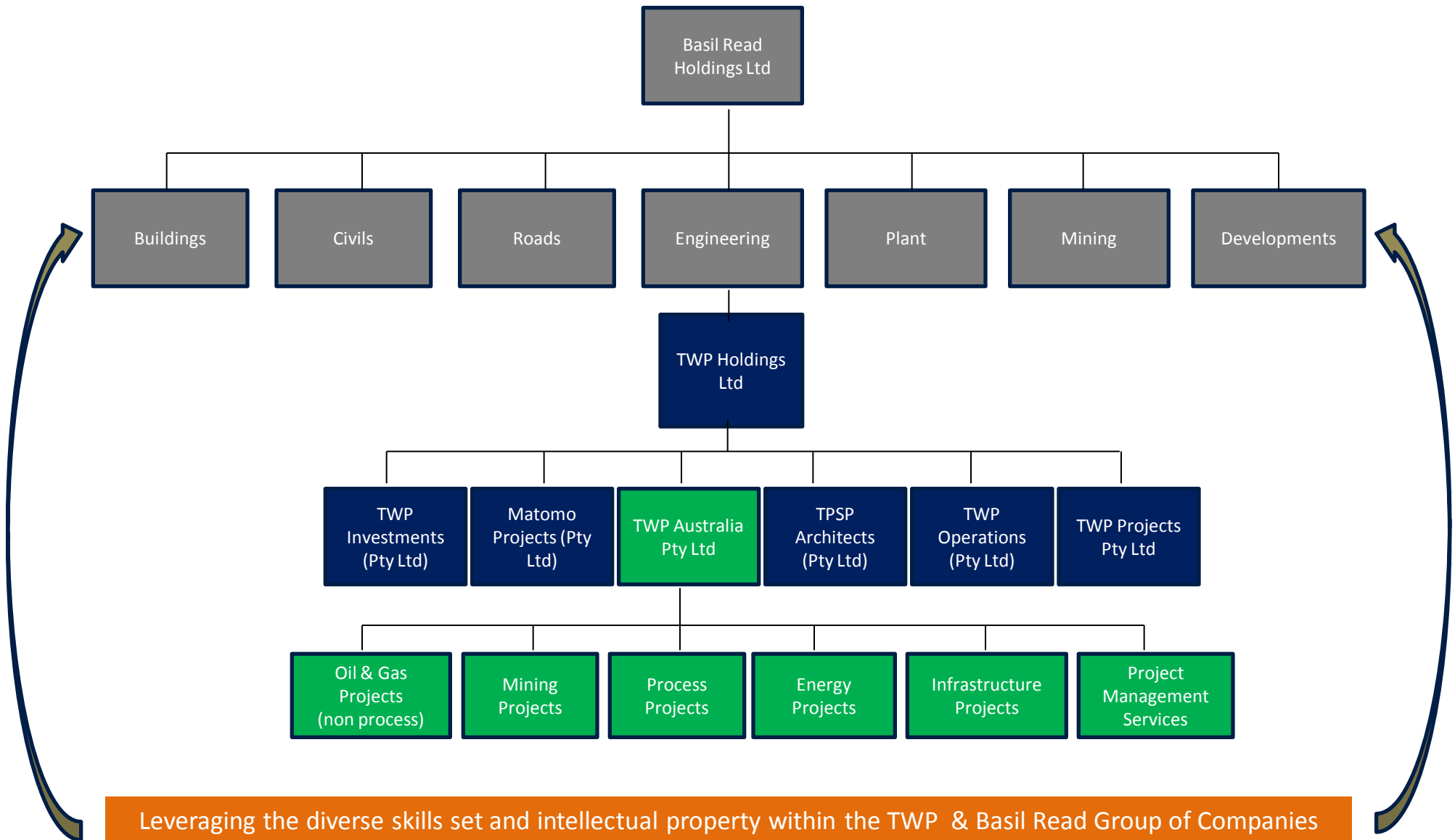




# Introduction

January 2010

- TWP is a subsidiary company of Basil Read
- Employee numbers - 4 000+
  - 95% engineers, project managers, technical staff, technical support
- Experience in the provision of FEED, EPCM and EPC across the mining & minerals value chain and other industry sectors
- Offices in Africa, Australasia, South America & Middle East
- Group turnover – US\$1.5b

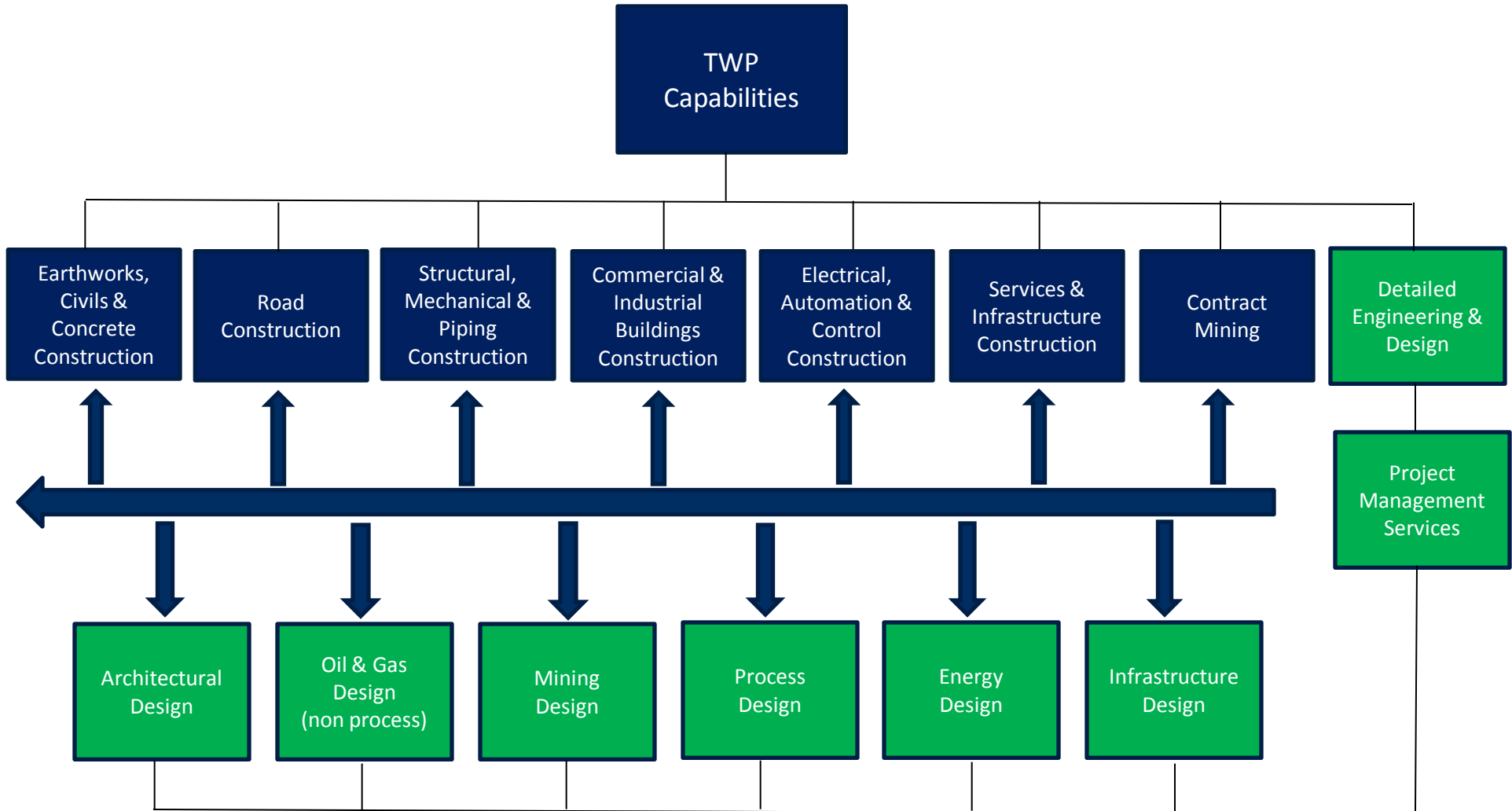


Leveraging the diverse skills set and intellectual property within the TWP & Basil Read Group of Companies



**Providing Integrated Engineering, Project Management & Construction Management Solutions in Australia, Africa, South America, South East Asia and the Middle East**

- Offices in:
  - Australasia
    - Perth - WA
    - Jakarta - Indonesia
  - Africa
    - South Africa – Multiple offices
    - Zambia
  - Middle East
    - Abu Dhabi
  - South America
    - Peru



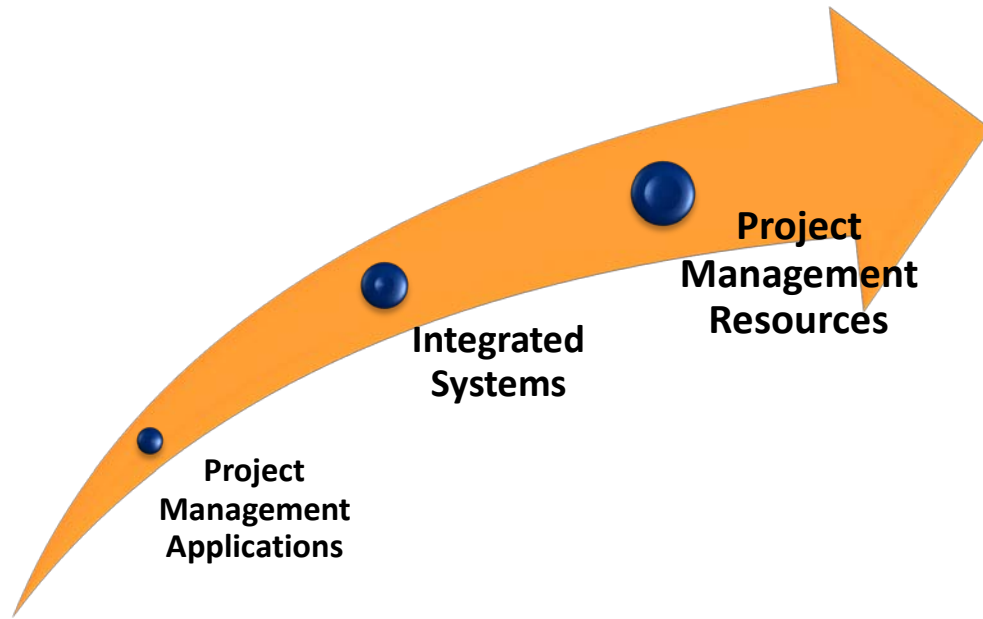
Multidisciplinary engineering design and construction capabilities delivering EPCM/EPC & LSTK services.

- **Services provided:**
  - Due diligence evaluations
  - Front end engineering & design
  - EPCM project delivery
  - EPC project solutions
  - Integrated Project Management Services
  
- **Multi disciplinary engineering design & construction capabilities:**
  - Geology
  - Geotechnical
  - Mining
    - Shaft systems
    - Shaft sinking
    - Ventilation & refrigeration
    - Materials handling
  - Process – all commodities
  - Civil Structural
  - Mechanical
  - Electrical
  - Automation & Control
  - HSEQR
  
- **Services & Infrastructure design & construction capabilities:**
  - Roads and rail
  - Underground utility services
  - Power Generation and distribution
  - Energy
  - Water storage and distribution
  - Compressed air generation and reticulation
  - Bulk storage facilities
  - Industrial buildings and maintenance facilities
  - Ventilation and refrigeration
  
- **Project Management Services Capabilities:**
  - PMP Project Management
  - Integrated project controls
  - Cost engineering
  - Planning and scheduling
  - Contracts and procurement
  - Information management

TWP Australia focuses on delivering **capital project excellence** to our clients through an unique mix of creative engineering, professional project management and understanding our client's business needs, we deliver **predictable project outcomes**

- We are client focused
- We leverage the TWP skills to our clients benefit
- We are a diversified business with divers skills
- We have forged strategic associations
  - Engineers
  - Constructors
- We focus on predictable capital project success

# CLOSING STATEMENT



PREDICTABLE  
CAPITAL  
PROJECT  
SUCCESS

ENGINEERING  
AND PROJECT  
MANAGEMENT  
SERVICES



- World class safety record and awards
- Relationship focused
- Better, cheaper, faster
- Complete solution across the value chain
- Integrated Project Management System with real time proactive reporting
- Professional Project Management – PMP's
- In depth knowledge and industry recognised technical experts
- Mining & processing capabilities across all commodities
- International project experience
- 1<sup>st</sup> & 3<sup>rd</sup> world project experience

The TWP value proposition has delivered successful projects to our global clients, we would like to afford the same opportunity to your company.

Should be interested in our value proposition, please contact us as follows:

- Website – [www.twpaustralia.com.au](http://www.twpaustralia.com.au)
- Email – [twp@twpaustralia.com.au](mailto:twp@twpaustralia.com.au)
- Telephone - +61 8 9214 8888